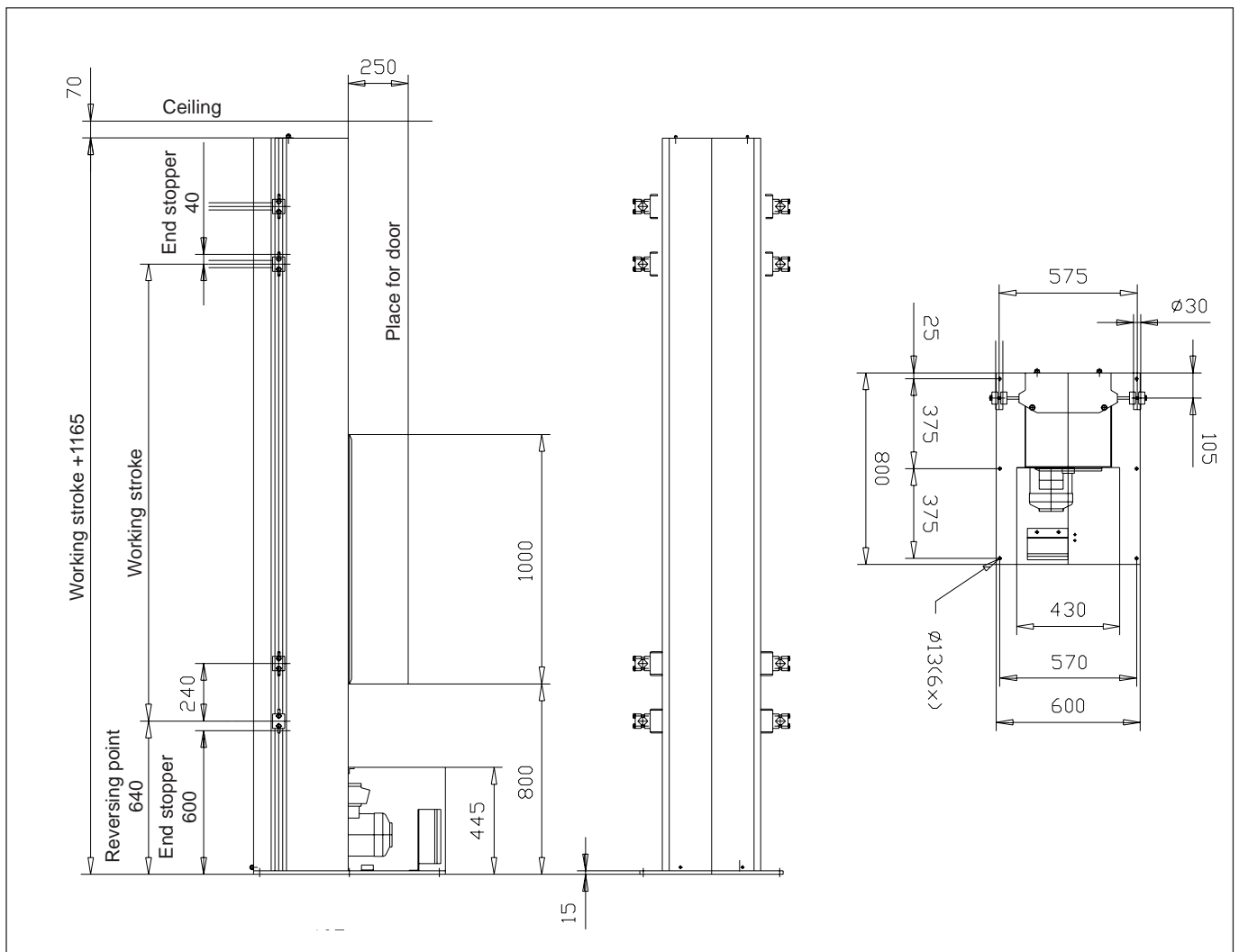




BETTER SOLUTIONS ARE THE RESULT OF CONVINCING DETAILS.

# Reciprocator EHR 8300

## Electrical Reciprocator



The stroke carriage, to which the spray guns are attached with appropriate holders, travels up and down a guideway. The load can be counterbalanced by placing a suitable number of weights in the counterbalance carriage. The drive of the electric reversing gear motor is transmitted by a roller chain to the stroke and counterbalance carriage

attached at each end. The position of the stroke carriage is established by an encoder that feeds the position signals to the linear-path control.

A frequency converter controls the gear motor speed, thus permitting continuous variation of the stroking speed.



BETTER SOLUTIONS ARE THE RESULT OF CONVINCING DETAILS.

## Technical Data

### Reciprocator EHR 8300 – Electrical Reciprocator

Stroke length:	1.000 - 3.000 mm minimum stroke 500 mm
Stroke speed:	0,3 - 0,8 m/sek. adjustable on the control cabinet with frequency regulated drive control
Displacement transducer:	precision potentiometer as analog encoder or incremental encoder every 1 safety limit switch in end position
Ultimate load on carriage:	max. 30 kg at 200 mm distance
Power supply:	230/400 V, 50 - 60 Hz
Nominal capacity:	1,5 kW
Protection:	IP 54, explosion proof version (option)
Coating:	primer coating, colour finish RAL (option)

### Auxiliary Equipment:

Roller set:	roller with shift lock
In/out positioning unit EVK 920:	stroke 600 mm, approx. 4 m/min. IP 54, explosion proof version (option)
Control RECON:	potentiometer control, PLC control