



PERFECT PROCESS CONTROL, FAST COLOUR CHANGE, EASY TO USE.

2K-UniMix

Electronic multi-component technique



Areas of Application

The dosing system 2K-UniMix is suitable for all kinds of paints consisting of two components prior to application, i.e. base coat (A) and catalyst (B) which are combined according to a set mixing ratio and chemically bind.

Typical areas of application

- Wood or plastic parts
- Large machinery, containers, aeroplanes, chemical plants,
- Where high resistance towards mechanical, chemical and climatic influences is required,
- When high quality coatings with high elasticity are demanded,
- When using high solids paints which due to their chemical reactions require low curing times,
- Fast curing of the paint coat at room or increased ambient temperature with high impact resistance of the paint coat allowing safe storage or further processing of the painted parts.

Reliable Application

A and B components are continuously mixed. The actual flow of material is measured, controlled and displayed. The flow rate preset at the operator's control panel is electronically controlled. Inaccurate mixing is practically impossible.

Should a deviation from the set values nevertheless occur, a second safety device is activated: immediate equipment shut-off follows.

The processing time of the mixed material is also precisely controlled. At conclusion of the processing time, the flushing process is initiated automatically (the equipment is totally cleaned).

Hardening of the material which would cause damage to the equipment is impossible.

Additional safety is given by the independent calibration of the measuring cells within the metering function.

Technical Data

2K-UniMix

Mixing ratio:	1 : 1 - 20 : 1
Viscosity max.:	400 mPas
Pressure max.:	20 bar
Temperature:	0 - 50 °C
Protection:	IP 54
Material:	1.4301; 1.4305; 1.4571
Power supply:	230 V; 10 A
Pot life time:	≥ 1 min.
Dimensions:	2200x1010x1000 mm (HxWxD)

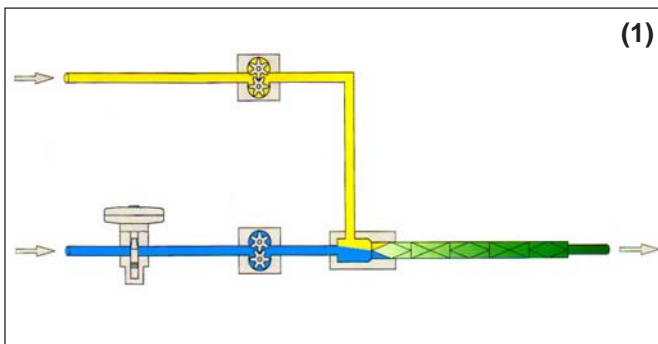
Features

- The 2K-UniMix only mixes quantities needed at any time within the entire system
- No inaccurate mixing possible
- Reduced material and disposal costs
- Extremely fast colour changes reduce production costs
- Minimum solvent consumption lowers degree of emission, material and disposal cost
- High operation safety by simple handling
- Printed reports for cost, quality, production and environmental controls
- Front end technology enables any numbers of paints and hardeners

User-friendly

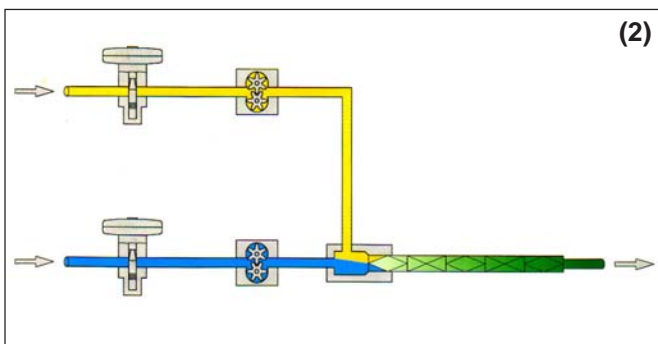
The functions for the 2K-UniMix can be programmed via the operations panel in the paint cabin:

- preset colours
- mixing ratio
- actual flow of components A and B
- quantity flushing liquid, preset quantities, preset processing time



Manual Application – Options (1):

- Hazard-proof operators panel for paint programming within paint cabin
- Use 1 or 2 manual spray guns
- Gun triggering device for spraying systems, automatic flushing and paint priming
- Use of dosing unit in hazardous areas



Automatic Application – Options (2):

- Programming of set paint quantity from operators panel
- Robot interfacing
- Programming of set paint quantity by robot