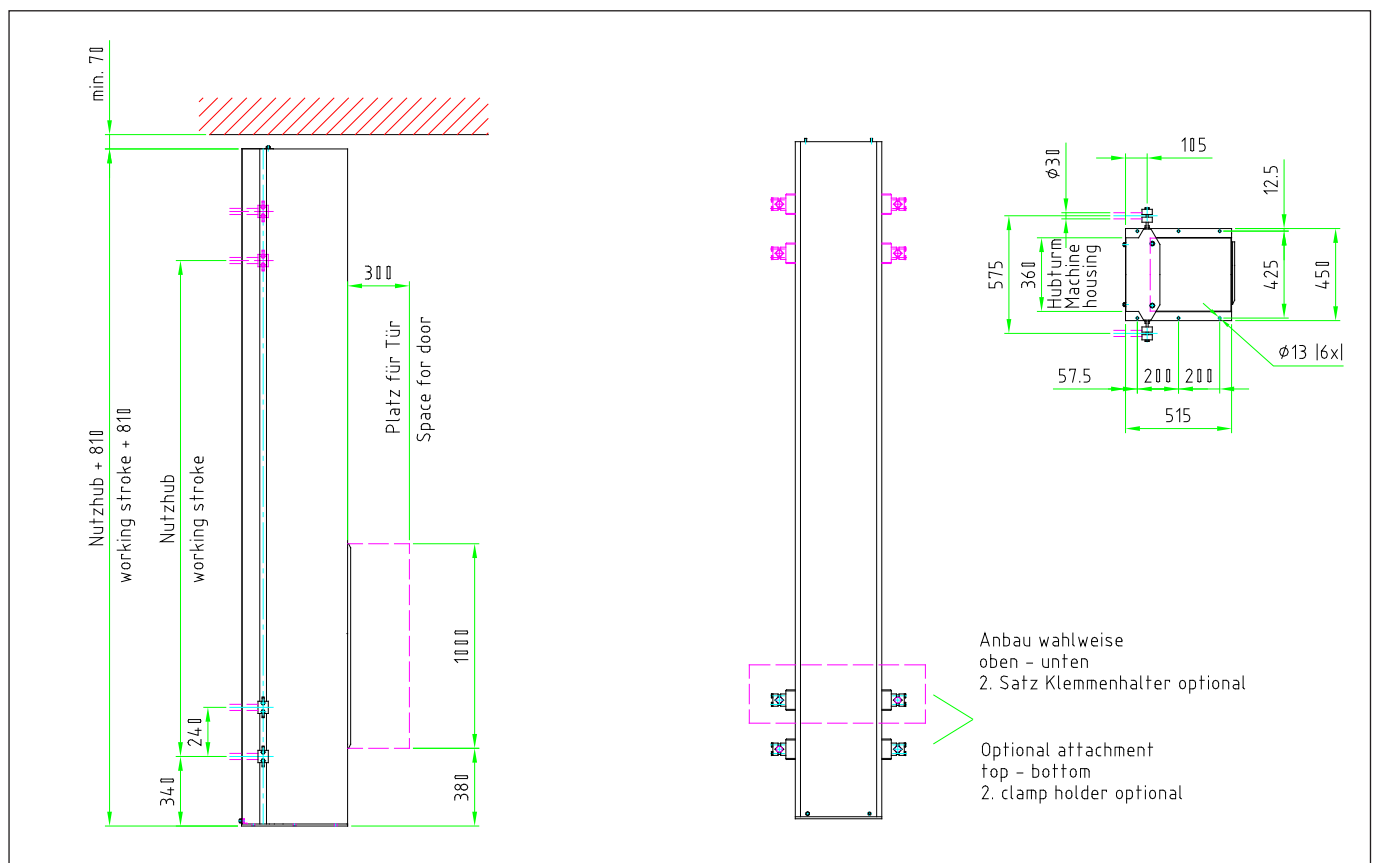


# MH

## Mechanical reciprocator with fixed stroke



This unit consists of a slide carriage assembly and an electrical gear motor.

The carriage with attached spray systems is guided back-flash free on rails with maintenance-free rollers. A shuttle assembly connected to roller chain moves the carriage up and down.

Stroke length is determined by the distance of the two sprockets.

An electrical motor with variably adjustable control-worm gear operates the drive.

In order to prevent soiling of the interior reciprocator station, cone-shaped plastic lips are attached to cover the side openings.

The reciprocator is optionally mounted on a roller-guided shifting device.



## MECHANICAL RECIPROCATOR WITH BUILT IN ADVANTAGES.

### Technical Data

#### MH – Mechanical Reciprocator with Fixed Stroke

Type of construction:		horizontal and vertical
Encoder system:		slotted disc or incremental encoder
Drive:		motor gearbox with manual or automatic speed adjustment; IP 54 altern. Ex option: brake motor
Accessories:	In/out positioning unit	MV manually operated EVK electrically operated PVK pneumatically operated
	Controls:	workpiece identification sensor spray-gun control
Speed:	MH 1	10 - 52 m/min
	MH 2	13 - 65 m/min
	MH 2T	15 - 85 m/min
	MH 3	15 - 85 m/min
Load:	MH 1	25 kg
	MH 2	25 kg
	MH 2T	30 kg
	MH 3	40 kg

Higher loads upon request.