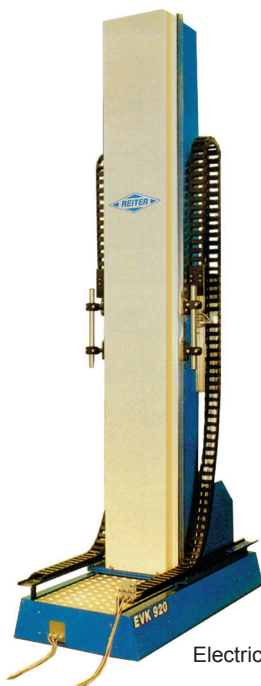




ELECTRICAL RECIPROCATOR WITH BUILT IN ADVANTAGES.

Electrical Reciprocator

For automatic powder and wet painting installations



Electrical Reciprocator EHR

Auxiliary Equipment

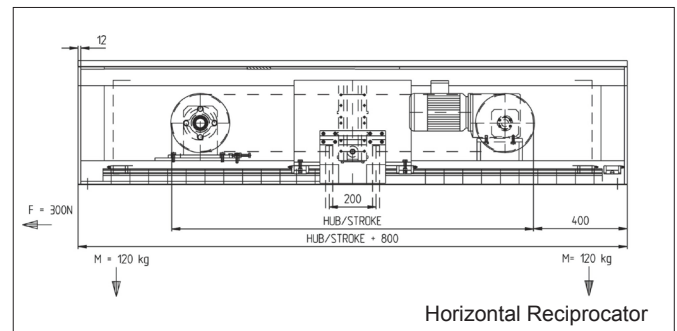
- IN-OUT axis
- 2 and 3 axes, electrically or pneumatically operated
- Overhead suspended versions
- Rollers with fixing device
- Cable carrier assemblies
- Tilting axis
- Spray gun support units

Controls

In addition to the mechanics Reiter offers the control technology designed to be achieved for perfect reciprocating action. Even in its basic versions the integrated speed compensation ensures highest accuracy at different speeds and loads.

The controls available range from simple Stand-Alone-Controllers for reversing points and reciprocating speed

to free programmable controls with variable stroke speed profile depending on geometry of the parts to be sprayed. The integration or communication with application technology control, including the control for additional axes, storage and handling of programs are also available. Within our automation department we develop and implement latest control technology with PLC and PC based gap, height and depth controls for paint application processes.



Features

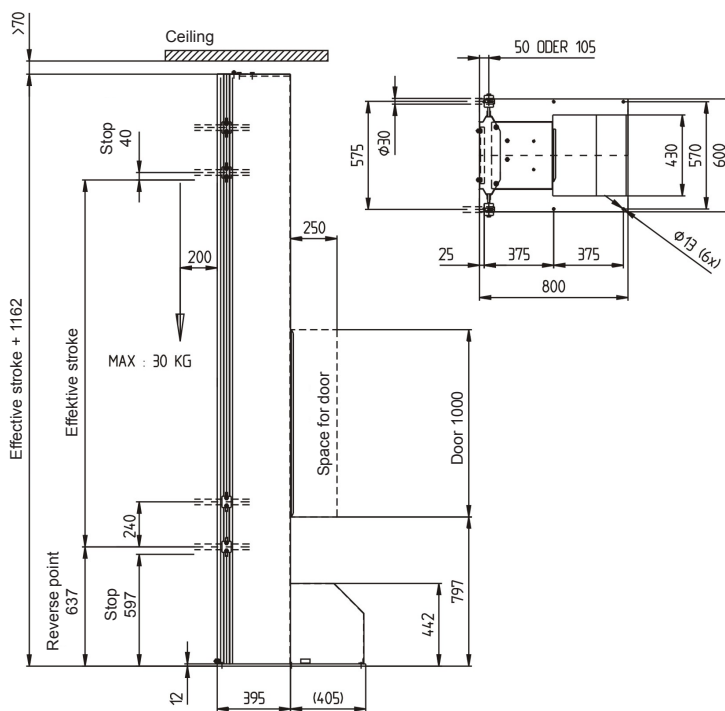
- Rigid and self supporting welding structure, for minimum vibrations
- Smooth and continuous movement achieved by 12 guide rollers on main carriage
- Drive by maintenance free motor gear box (AC drive)
- Limit switches at top and bottom with mechanical buffers
- Cover designed to minimize dirt inside reciprocator
- Maintenance and service friendly construction
- Special versions for stroke up to 6 m
- Ex-proof versions
- Electrical positioning units
- Horizontal reciprocators

ELECTRICAL RECIPROCATOR WITH BUILT IN ADVANTAGES.

Technical Data

Reciprocator	EHR 8300/EHR 8300-K	EHR 8300-S	LH
Standard stroke length:	500 mm - 3000 mm	500 mm - 3000 mm	500 mm - 2500 mm
Stroke speed:	7 - 50 m/min.	up to max. 1,5 m/s	8 - 48 m/min
Ultimate load on carriage:	30 kg at 200 mm distance from reciprocator	30 kg, at 200 mm distance from reciprocator	15 kg, at 500 mm distance from reciprocator
Power supply:	240/400 V, 50 - 60 Hz	240/400 V, 50 - 60 Hz	240/400 V, 50 - 60 Hz
Rated power:	1,5 kW	1,5 kW	0,75 kW
Protections:	EHR, EVK IP 44 (standard), Ex-version possible, Control cabinet IP 54	EHR, EVK IP 44 (standard), Ex-version possible, Control cabinet IP 54	EHR, EVK IP 44 (standard), Ex-version possible, Control cabinet IP 54
Weight:	265 - 440 kg	265 - 440 kg	110 - 170 kg

Reciprocator EHR 8300/EHR 8300-S



Reciprocator LH

