



BETTER SOLUTIONS ARE THE RESULT OF CONVINCING DETAILS.

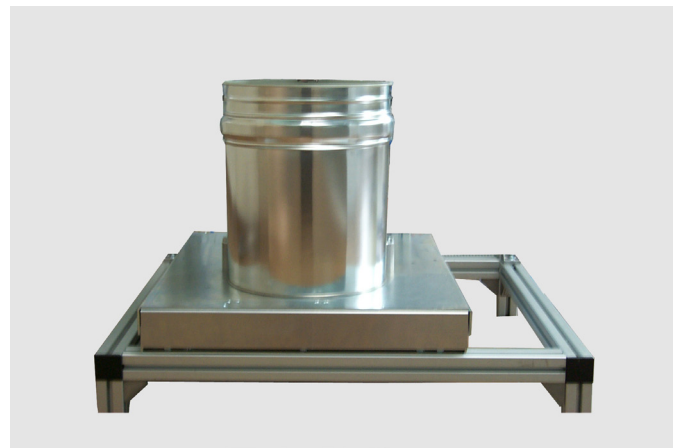
Level Control

Mechanical/pneumactical high-/low level control



Level control with mounted barrel lid lifting device

The system developed by Reiter is based on customers needs. The gravimetrical system monitors the container level without direct contact to the material. This improves the safety production eliminating any cleaning work when filling the material tank or changing colour.



Level control without barrel lid lifting device

The freely adjustable pneumatic evaluation allows the use even on paint containers that carry high voltage. The signal caused by the pneumatic control valve has an effect on a push button switch which triggers a potential-free contact.

The pressure switch has to be mounted outside the high voltage or Ex area. The permitted tube length between the pneumatic control valve at the level control and the pressure switch is max. 20 meters.

The systems can be fitted to existing installations without problems.

BETTER SOLUTIONS ARE THE RESULT OF CONVINCING DETAILS.



Technical Data

Level Control

Type:	solutions for 30 l to 200 l packing drums with/without mounted barrel lid lifting device
Output signals:	Min level Max level Min/Max level Min/Min level
Connection per control valve/pressure switch:	pneumatic hose, electric control line
Compressed air supply:	min. 5 bar (consumption near zero)
Range of application:	standard paint supply systems, supply systems under high voltage, paint supply systems in Ex zone
Dimensions:	approx. 600mm x 720mm x 85mm (w x d x h)