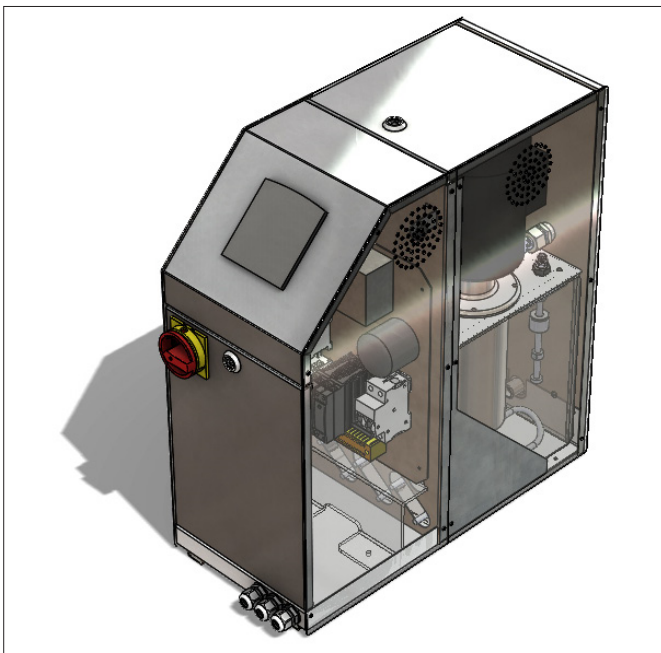




PERFECT FINISH – PAINTED BY THE SPECIALIST.

# HCR01 – Temperature Regulator Unit

## For paints, sealers and mastics



The temperature regulator unit has been specifically designed for use with paints and sealers by accurately controlling process water to a secondary heat exchanger. By using an onboard water tank with independent control, the paint or mastic temperature threshold limits can be set providing a failsafe device were the product is protected from temperature damage. This unit can be used with open loop control maintaining a constant water temperature to a secondary device or alternatively with the use of a Pt100 probe the unit can operate in closed loop control maintaining product temperature.

The unit can be used in conjunction with heat exchangers, jacketed tanks of heated take-off hoses.

### Features

- Controller – 90mm Colour Unitronics touch screen HMI with integrated PLC
- Water Circuit Monitoring – Flow and temperature monitoring for process and chilled water

- Temperature Control – Built in PID with Autotune function
- Level Control – Automatic level top up with float valve and level switch protection
- Plate Heat Exchanger – For connection to chilled water supply c/w solenoid valve
- Heater Control – Fully modulating heater control from 0 up to 4.5kW
- Fail Safe Temperature Protection – Mechanical Capillary cut off
- Alarms – Audible alarm and visual built in alarm screens

### Heat Transfer Fluid – Water

The units are supplied as standard set up for use with water as the thermal transfer fluid for operating temperatures from 6°C up to 90°C. The heater can be supplied in 3 options 3KW, 4.5KW and 9KW. The cooling circuit can be supplied with either a cooling coil for chilled water below 0°C or a plate heat exchanger for cooling above 0°C.

## Technical data

### HCR01 Temperature regulator unit

|                    |                                  |   |
|--------------------|----------------------------------|---|
| <b>Dimensions</b>  | Width:                           | 260 mm  |
|                    | Height:                          | 615 mm  |
|                    | Depth:                           | 560 mm  |
|                    | Weight:                          | 45 kg   |
|                    | Colour:                          | Stainless steel dull polish                       |
| <b>Connections</b> | Process circuit connections:     | 3/4" BSP Female cooling/process water connections |
|                    | Mains water supply:              | 3/8" BSP Female                                   |
| <b>Electrical</b>  | Power supply:                    | 380 to 415v 50Hz 3-phase + earth                  |
|                    | Power consumption:               | Varies according to the heater rating             |
|                    | Recommended customer protection: | 16A HRC fuses                                     |
|                    | Control circuit:                 | 24vdc   |

The unit is fitted with a BS 4343 / IEC EN 60309-2 industrial plug on a 2 meter power flex for easy connection / disconnection rated at 16A.

|                        |                         |                       |
|------------------------|-------------------------|-----------------------|
| <b>Process circuit</b> | Standard pump capacity: | 45 l/m max. flow      |
|                        |                         | 2.5 bar max. pressure |

|                      |  |  |
|----------------------|--|--|
| <b>Communication</b> | Additional communication ports can be provided as an option for receiving and sending information. |  |
|                      | • Serial/Ethernet/Profibus   |  |

